



*Total Solution Provider in Saw Device*

---

# SA26030BD

260.0 MHz IF SAW Filter  
30.25 MHz Bandwidth  
Revision 0: 16. Feb. 2010

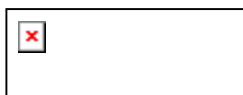


- Electrical Characteristics
  - Package Dimensions
  - Testing Environment
  - Frequency Characteristics
- 

**SAWNICS Inc.**

---

460 Cheonheung-ri, Seonggeo-eup, Cheonan-si, Chungcheongnam-do, 330-836 / Korea.  
Tel: +82 41 550 9372 / Fax: +82 41 550 9399 / [www.sawnics.com](http://www.sawnics.com)



## Electrical Characteristics

### Maximum Ratings

Parameters Description	Unit	Minimum	Typical	Maximum
Operating Temperature Range	°C	-	25	-
Storage Temperature Range	°C	-40	-	85
Maximum DC Voltage	V	-	-	10
Maximum Input Power	dBm	-	-	10
Source Impedance (single ended) <sup>(1)</sup>	Ω	-	50	-
Load Impedance (single ended) <sup>(1)</sup>	Ω	-	50	-
Package type & size	D			
Length x Width	mm <sup>2</sup>	-	20.0 x 12.6	-
Height	mm	-	-	5.05

### Electrical Specification

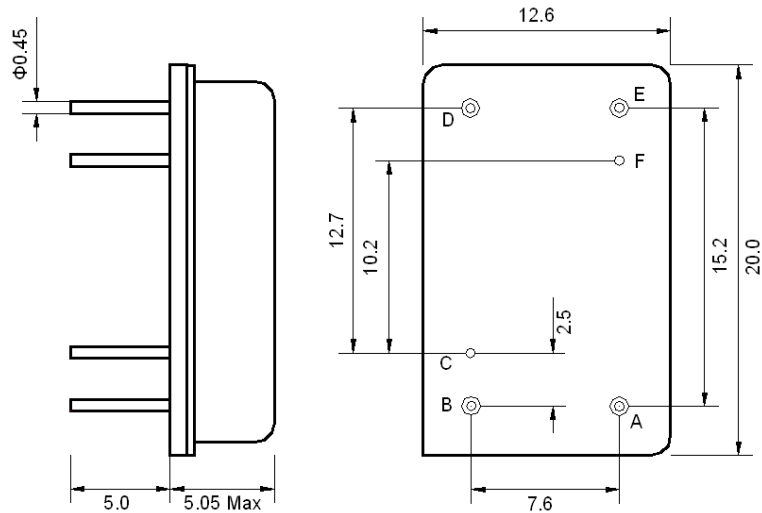
Parameters Description	Unit	Minimum	Typical	Maximum
Center Frequency (Fo)	MHz	-	260.0	-
Insertion Loss at Fo	dB	-	30.5	32.0
Group Delay Variation at Fo ± 14.52 MHz	nsec	-	42	70
Absolute Delay at Fo	usec	-	2.84	-
Passband Ripple Variation at Fo ± 14.52 MHz	dB	-	0.7	1.1
Bandwidth at -1dB	MHz	30.00	30.25	-
Bandwidth at -3dB	MHz	30.40	30.55	-
Bandwidth at -40dB	MHz	-	31.90	32.00
Bandwidth at -50dB	MHz	-	32.06	-
Ultimate Rejection	dB	50	55	-
Temperature Coefficient	ppm/°C	-	-18	-

**Notes :** (1) With Matching Network (Ref. Testing Environment Circuit as shown below).

Those impedances could be modified with different impedance values and/or structures, if necessary.

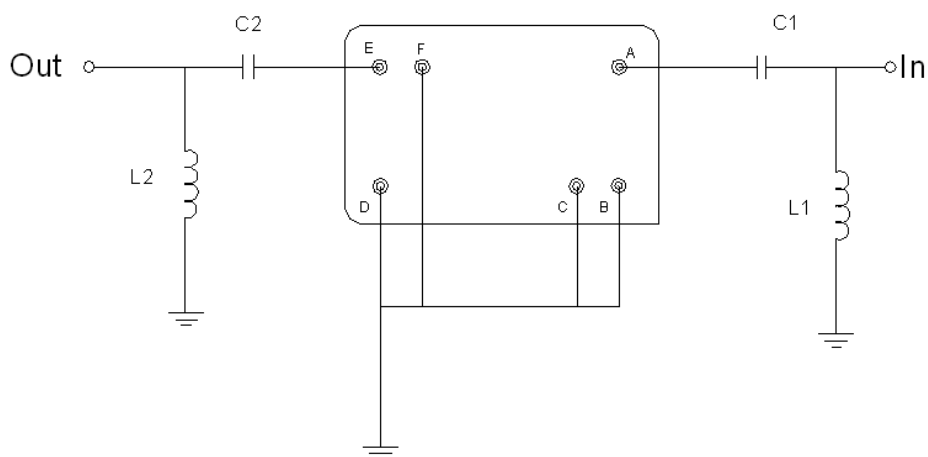


**Package Dimensions**



Pin Description	
B, C, D, F	Ground
A	Input
E	Output

**Testing Environment**



Test Fixture & Values	
Input	L1 = 6.8 nH, C1 = 330 pF
Output	L2 = 8.2 nH, C2 = 270 pF
Source/Load Impedance	50

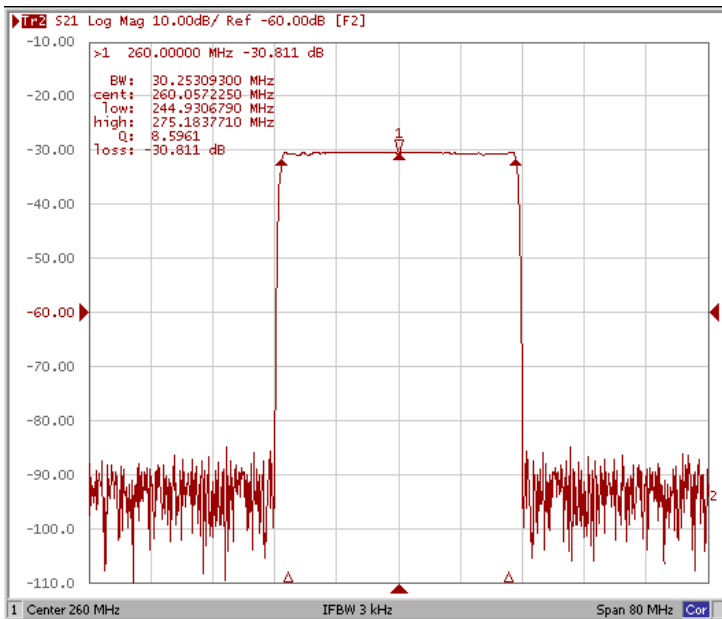


### Frequency Characteristics

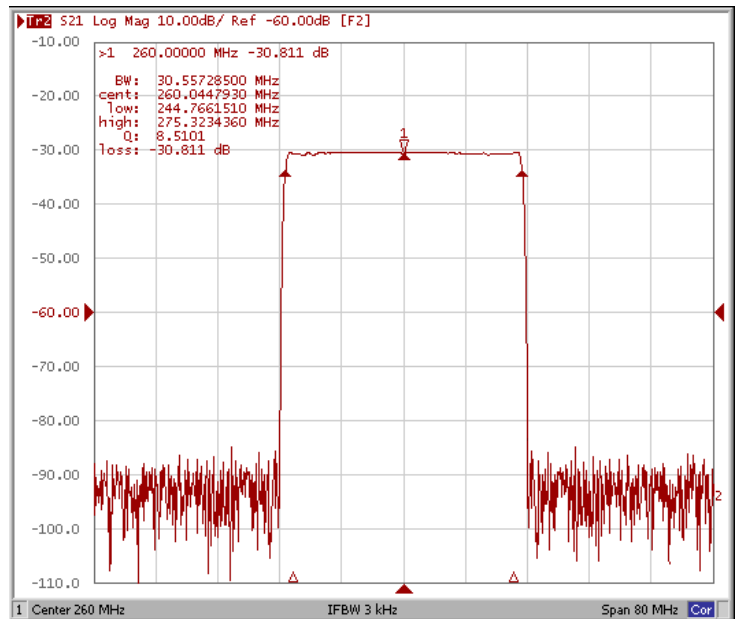
\* Room Temperature: +25°C

#### Frequency Response

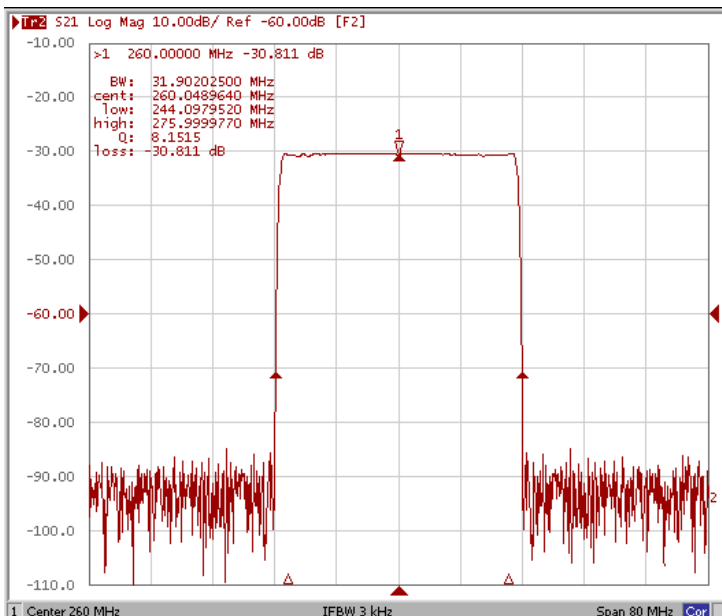
Bandwidth at -1.0 dB



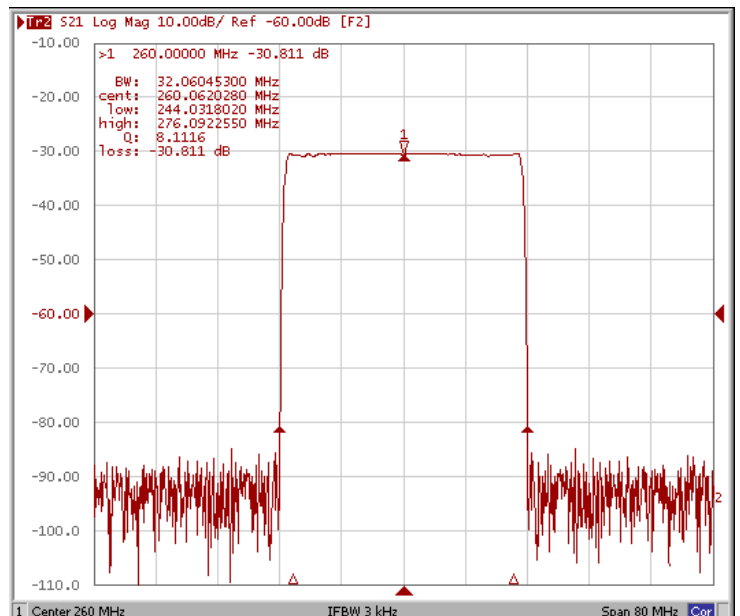
Bandwidth at -3.0 dB



Bandwidth at -40.0 dB



Bandwidth at -50.0 dB



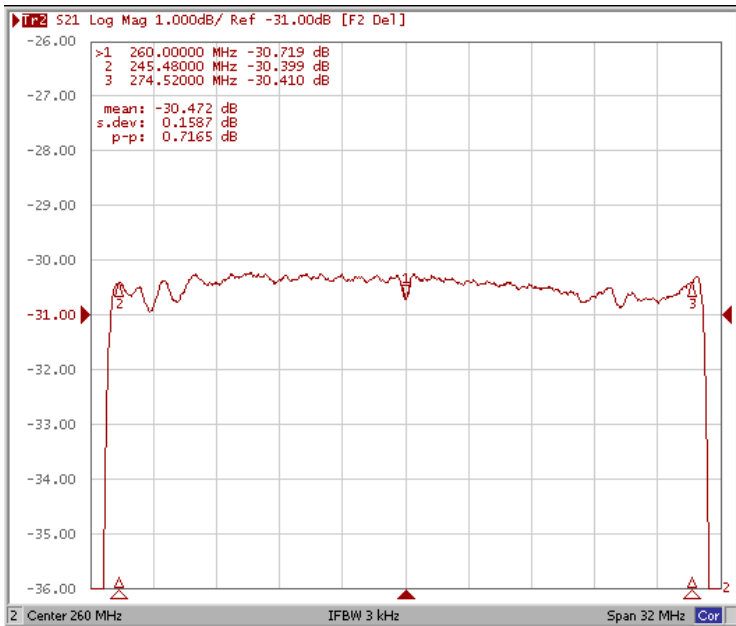


### Frequency Characteristics

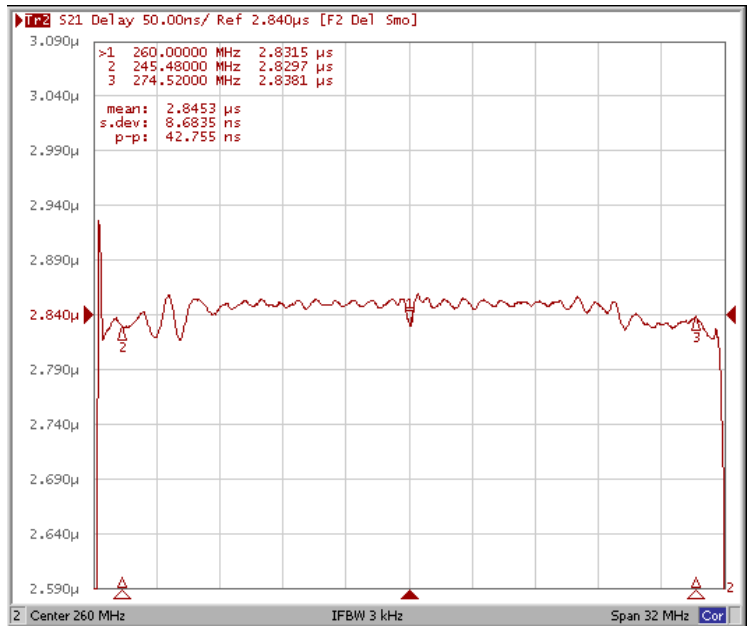
\* Room Temperature: +25°C

#### Frequency Response

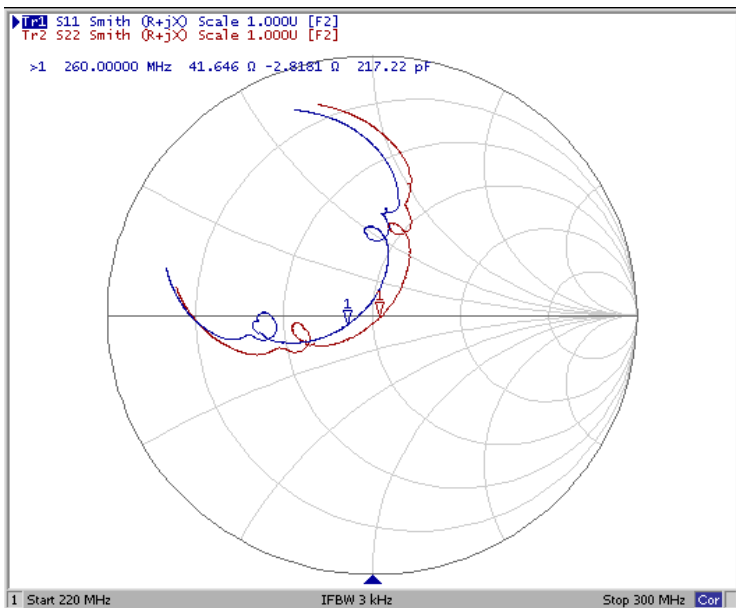
Ripple Variation Fo±14.52MHz



Group Delay Variation Fo±14.52MHz



Smith Chart



VSWR

